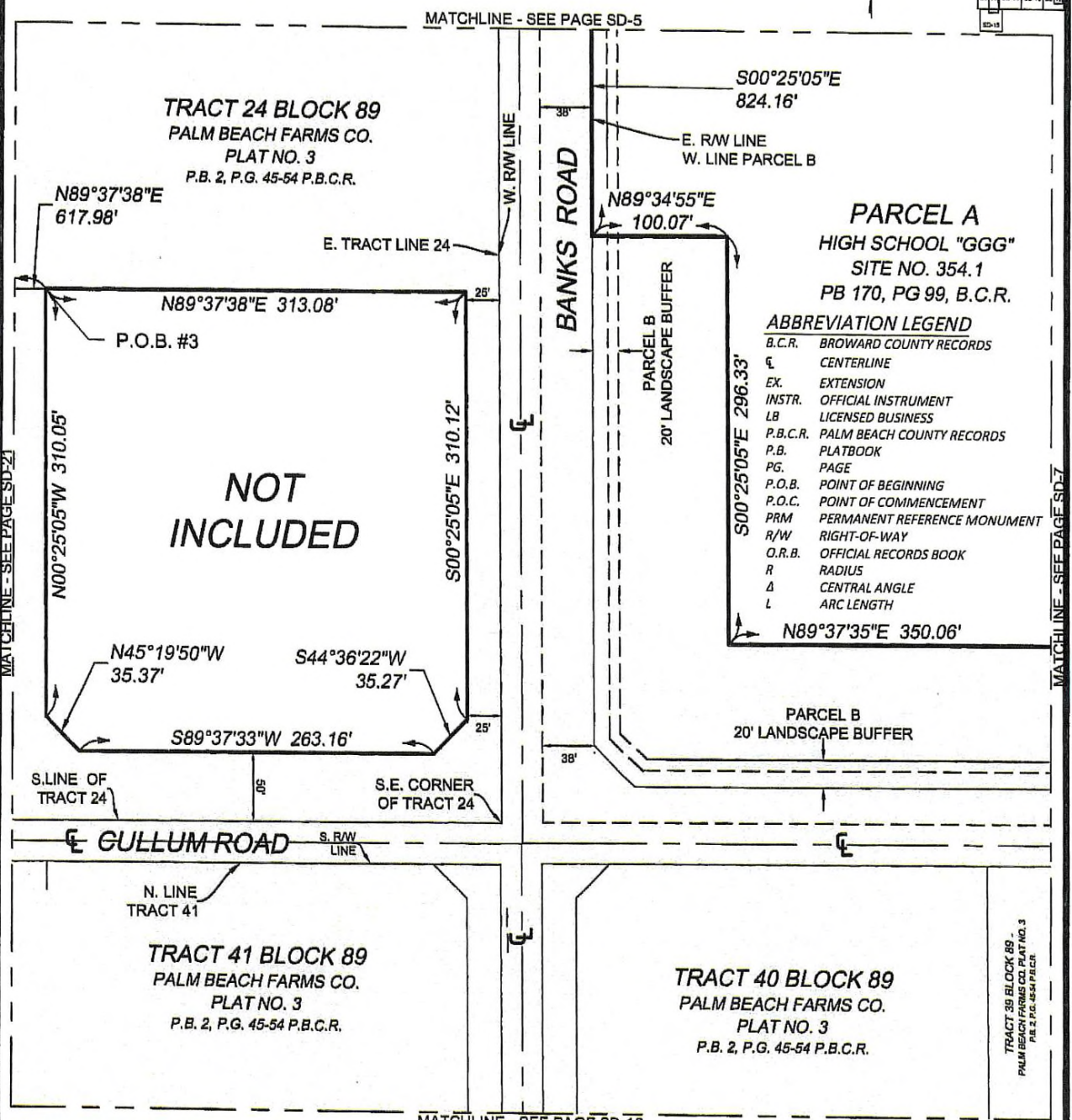


# SKETCH OF DESCRIPTION: CDD LAND CONVEYANCE PARCEL

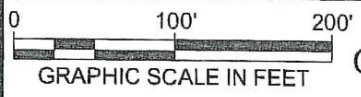
|       |       |       |       |
|-------|-------|-------|-------|
| SD-2  | SD-3  | SD-4  | SD-5  |
| SD-6  | SD-7  | SD-8  | SD-9  |
| SD-10 | SD-11 | SD-12 | SD-13 |
| SD-14 | SD-15 | SD-16 | SD-17 |
| SD-18 | SD-19 | SD-20 | SD-21 |



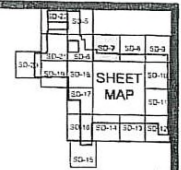
\\CTAFLE02\SURVEY\_PROJECTS\PROJECTS\2008\08-0049-005-01 MAIN STREET AT COCONUT CREEK\DRAWINGS\SKETCH\_AND\_DESC\CDD BNDY BASE TO CTA\_2024-08-19.DWG

**Craven • Thompson & Associates, Inc.**  
ENGINEERS • PLANNERS • SURVEYOR'S  
3563 N.W. 53RD STREET, FORT LAUDERDALE, FLORIDA 33309 FAX: (954) 739-6409 TEL: (954) 739-6400  
FLORIDA LICENSED ENGINEERING, SURVEYING & MAPPING BUSINESS No. 271  
MATERIAL SHOWN HEREON IS THE PROPERTY OF CRAVEN-THOMPSON & ASSOCIATES, INC. AND SHALL NOT BE REPRODUCED IN WHOLE OR IN PART WITHOUT WRITTEN PERMISSION. COPYRIGHT (C) 2025

|                      |                      |         |
|----------------------|----------------------|---------|
| JOB NO.: 08-0049-005 | SHEET 6 of 22 SHEETS |         |
| DRAWN BY: JDP        | F.B. N/A             | PG. N/A |
| CHECKED BY: RC       | DATED: 02/10/2025    |         |



# SKETCH OF DESCRIPTION: CDD LAND CONVEYANCE PARCEL

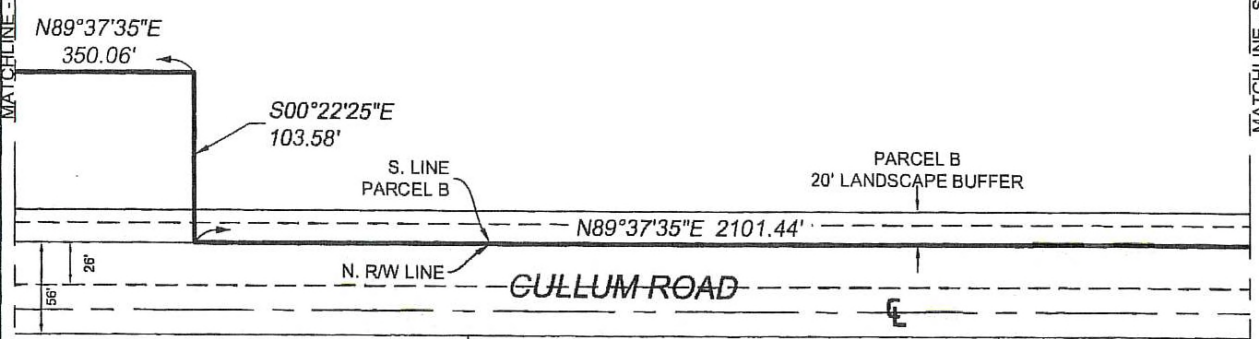


- ABBREVIATION LEGEND**
- B.C.R. BROWARD COUNTY RECORDS
  - CL CENTERLINE
  - EX. EXTENSION
  - INSTR. OFFICIAL INSTRUMENT
  - LB LICENSED BUSINESS
  - P.B.C.R. PALM BEACH COUNTY RECORDS
  - P.B. PLATBOOK
  - PG. PAGE
  - P.O.B. POINT OF BEGINNING
  - P.O.C. POINT OF COMMENCEMENT
  - PRM PERMANENT REFERENCE MONUMENT
  - R/W RIGHT-OF-WAY
  - O.R.B. OFFICIAL RECORDS BOOK
  - R RADIUS
  - Δ CENTRAL ANGLE
  - L ARC LENGTH

**PARCEL A**  
HIGH SCHOOL "GGG"  
SITE NO. 354.1  
PB 170, PG 99, B.C.R.

MATCHLINE - SEE PAGE SD-6

MATCHLINE - SEE PAGE SD-8



**TRACT 39 BLOCK 89**  
PALM BEACH FARMS CO.  
PLAT NO. 3  
P.B. 2, P.G. 45-54 P.B.C.R.

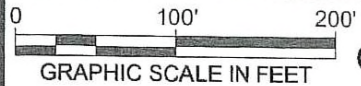
**TRACT 38 BLOCK 89**  
PALM BEACH FARMS CO.  
PLAT NO. 3  
P.B. 2, P.G. 45-54 P.B.C.R.

**TRACT 37 BLOCK 89**  
PALM BEACH FARMS CO.  
PLAT NO. 3  
P.B. 2, P.G. 45-54 P.B.C.R.

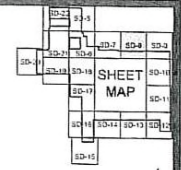
\\CTAFILE02\SURVEY\_PROJECTS\PROJECTS\2008\08-0049-005-01 MAIN STREET AT COCONUT CREEK\DRAWNGS\SKETCH\_AND\_DESC\CDD BNDY BASE\_TO CTA\_2024-08-19.DWG

**Craven • Thompson & Associates, Inc.**  
ENGINEERS PLANNERS SURVEYOR'S  
3583 N.W. 53RD STREET, FORT LAUDERDALE, FLORIDA 33309 FAX: (954) 739-6409 TEL: (954) 739-6400  
FLORIDA LICENSED ENGINEERING, SURVEYING & MAPPING BUSINESS No. 271  
MATERIAL SHOWN HEREON IS THE PROPERTY OF CRAVEN-THOMPSON & ASSOCIATES, INC. AND SHALL NOT BE REPRODUCED IN WHOLE OR IN PART WITHOUT WRITTEN PERMISSION. COPYRIGHT (C) 2025

|                      |                      |
|----------------------|----------------------|
| JOB NO.: 08-0049-005 | SHEET 7 of 22 SHEETS |
| DRAWN BY: JDP        | F.B. N/A PG. N/A     |
| CHECKED BY: RC       | DATED: 02/10/2025    |



# SKETCH OF DESCRIPTION: CDD LAND CONVEYANCE PARCEL



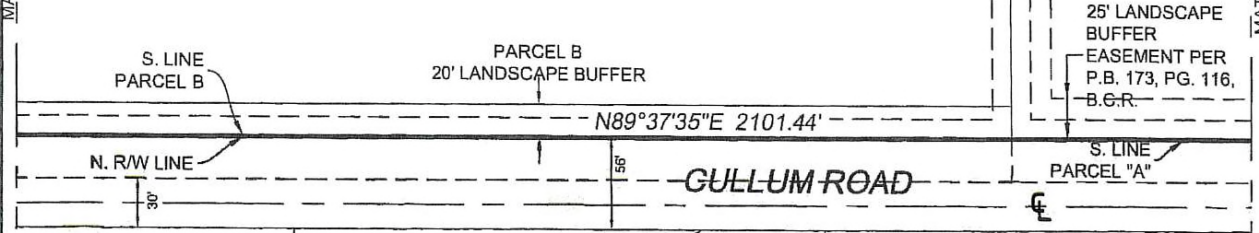
- ABBREVIATION LEGEND**
- B.C.R. BROWARD COUNTY RECORDS
  - CL CENTERLINE
  - EX. EXTENSION
  - INSTR. OFFICIAL INSTRUMENT
  - LB LICENSED BUSINESS
  - P.B.C.R. PALM BEACH COUNTY RECORDS
  - P.B. PLATBOOK
  - PG. PAGE
  - P.O.B. POINT OF BEGINNING
  - P.O.C. POINT OF COMMENCEMENT
  - PRM PERMANENT REFERENCE MONUMENT
  - R/W RIGHT-OF-WAY
  - O.R.B. OFFICIAL RECORDS BOOK
  - R RADIUS
  - Δ CENTRAL ANGLE
  - L ARC LENGTH

**PARCEL A**  
HIGH SCHOOL "GGG"  
SITE NO. 354.1  
PB 170, PG 99, B.C.R.

**PARCEL "A"**  
"GREEN FARMS REPLAT"  
PB 173, PG 116, B.C.R.

MATCHLINE - SEE PAGE SD-7

MATCHLINE - SEE PAGE SD-9



**TRACT 37 BLOCK 89**  
PALM BEACH FARMS CO.  
PLAT NO. 3  
P.B. 2, P.G. 45-54 P.B.C.R.

N. LINE TRACTS OF 34-40, BLOCK 89  
P.B. 2, PG'S 45-54, P.B.C.R.

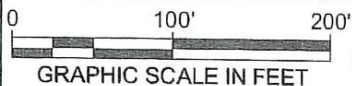
**TRACT 36 BLOCK 89**  
PALM BEACH FARMS CO.  
PLAT NO. 3  
P.B. 2, P.G. 45-54 P.B.C.R.

**TRACT 35 BLOCK 89**  
PALM BEACH FARMS CO.  
PLAT NO. 3  
P.B. 2, P.G. 45-54 P.B.C.R.

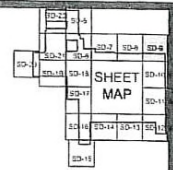
\\CTAFI02\SURVEY\_PROJECTS\PROJECTS\2008\08-0049-005-01 MAIN STREET AT COCONUT CREEK\DRAWINGS\SKETCH\_AND\_DESC\CDD BNDY BASE\_TO CTA\_2024-08-19.DWG

**Craven • Thompson & Associates, Inc.**  
ENGINEERS • PLANNERS • SURVEYOR'S  
3563 N.W. 53RD STREET, FORT LAUDERDALE, FLORIDA 33309 FAX: (954) 739-6409 TEL.: (954) 739-6400  
FLORIDA LICENSED ENGINEERING, SURVEYING & MAPPING BUSINESS No. 271  
MATERIAL SHOWN HEREON IS THE PROPERTY OF CRAVEN-THOMPSON & ASSOCIATES, INC. AND SHALL NOT BE REPRODUCED IN WHOLE OR IN PART WITHOUT WRITTEN PERMISSION. COPYRIGHT (C) 2025

|                      |                      |
|----------------------|----------------------|
| JOB NO.: 08-0049-005 | SHEET 8 of 22 SHEETS |
| DRAWN BY: JDP        | F.B. N/A PG. N/A     |
| CHECKED BY: RC       | DATED: 02/10/2025    |

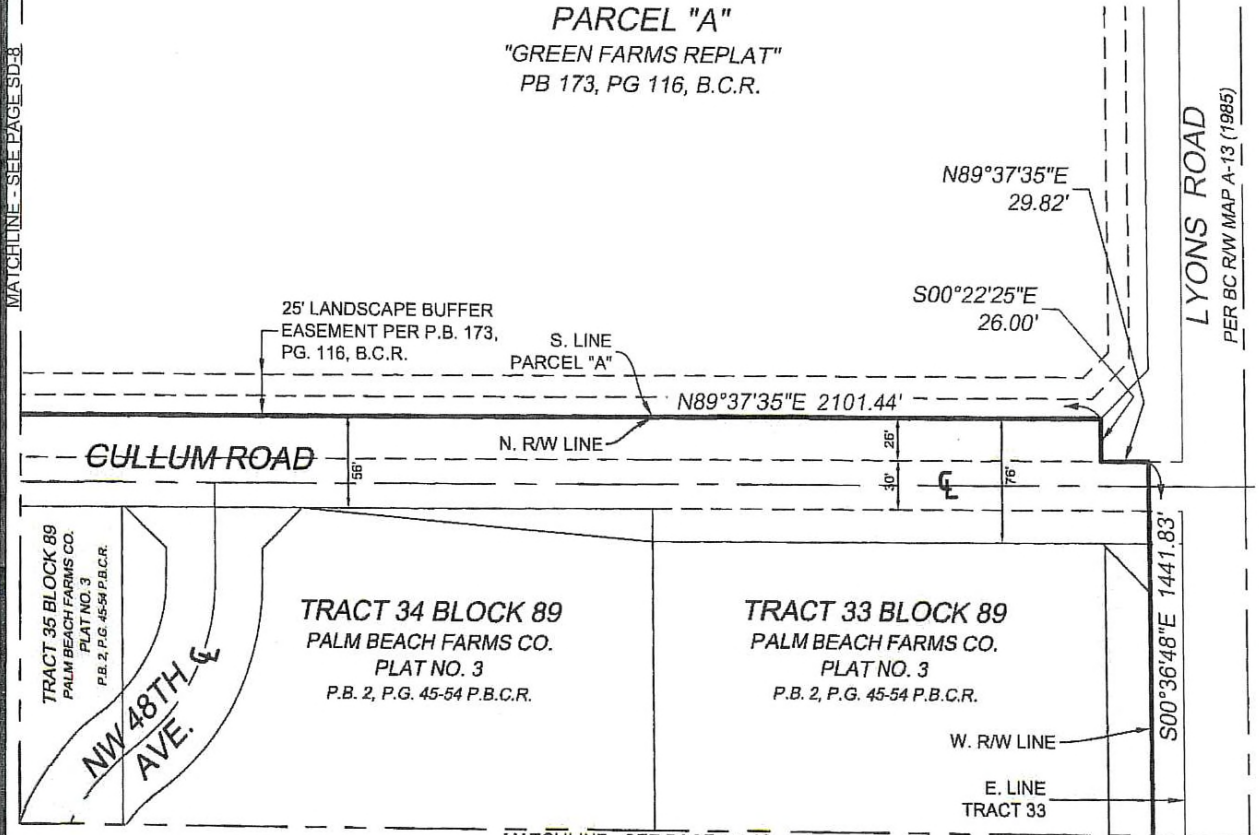


SKETCH OF DESCRIPTION:  
CDD LAND CONVEYANCE PARCEL



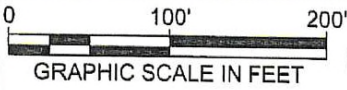
- ABBREVIATION LEGEND**
- B.C.R. BROWARD COUNTY RECORDS
  - CL CENTERLINE
  - EX. EXTENSION
  - INSTR. OFFICIAL INSTRUMENT
  - LB LICENSED BUSINESS
  - P.B.C.R. PALM BEACH COUNTY RECORDS
  - P.B. PLATBOOK
  - PG. PAGE
  - P.O.B. POINT OF BEGINNING
  - P.O.C. POINT OF COMMENCEMENT
  - PRM PERMANENT REFERENCE MONUMENT
  - R/W RIGHT-OF-WAY
  - O.R.B. OFFICIAL RECORDS BOOK
  - R RADIUS
  - Δ CENTRAL ANGLE
  - L ARC LENGTH

**PARCEL "A"**  
"GREEN FARMS REPLAT"  
PB 173, PG 116, B.C.R.

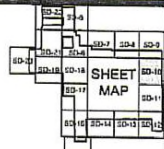


MATCHLINE - SEE PAGE SD-8 (left) / MATCHLINE - SEE PAGE SD-10 (right)

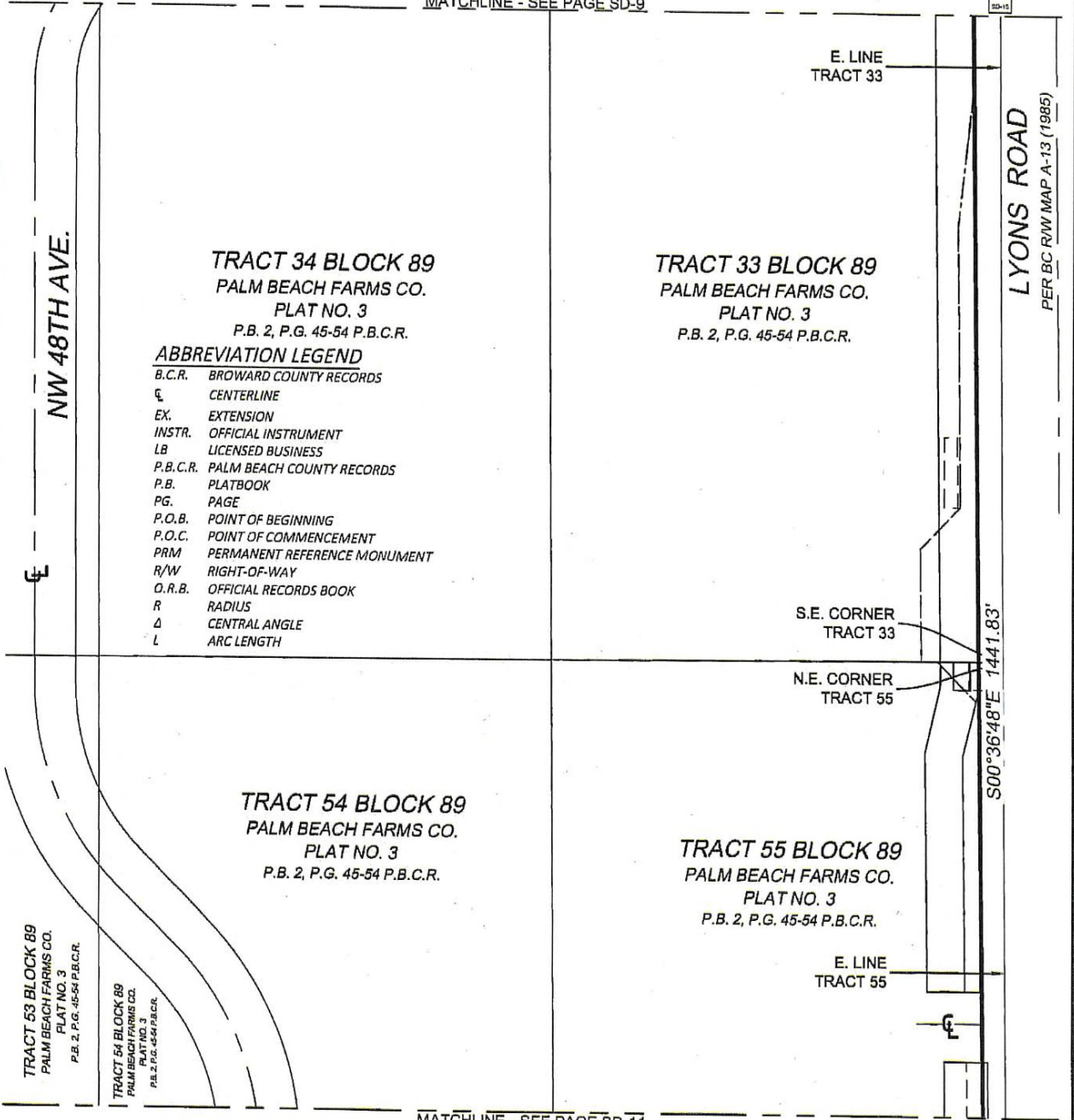
|  |                      |                      |
|--|----------------------|----------------------|
| <p><b>Craven • Thompson &amp; Associates, Inc.</b><br/>         ENGINEERS PLANNERS SURVEYOR'S<br/>         3583 N.W. 53RD STREET, FORT LAUDERDALE, FLORIDA 33309 FAX: (954) 739-8409 TEL: (954) 739-8400<br/>         FLORIDA LICENSED ENGINEERING, SURVEYING &amp; MAPPING BUSINESS No. 271<br/>         MATERIAL SHOWN HEREON IS THE PROPERTY OF CRAVEN-THOMPSON &amp; ASSOCIATES, INC. AND SHALL NOT BE REPRODUCED IN WHOLE OR IN PART WITHOUT WRITTEN PERMISSION. COPYRIGHT (C) 2025</p> | JOB NO.: 08-0049-005 | SHEET 9 of 22 SHEETS |
|  | DRAWN BY: JDP        | F.B. N/A PG. N/A     |
|  | CHECKED BY: RC       | DATED: 02/10/2025    |



# SKETCH OF DESCRIPTION: CDD LAND CONVEYANCE PARCEL



MATCHLINE - SEE PAGE SD-9



- ABBREVIATION LEGEND**
- B.C.R. BROWARD COUNTY RECORDS
  - CL CENTERLINE
  - EX. EXTENSION
  - INSTR. OFFICIAL INSTRUMENT
  - LB LICENSED BUSINESS
  - P.B.C.R. PALM BEACH COUNTY RECORDS
  - P.B. PLATBOOK
  - PG. PAGE
  - P.O.B. POINT OF BEGINNING
  - P.O.C. POINT OF COMMENCEMENT
  - PRM PERMANENT REFERENCE MONUMENT
  - R/W RIGHT-OF-WAY
  - O.R.B. OFFICIAL RECORDS BOOK
  - R RADIUS
  - Δ CENTRAL ANGLE
  - L ARC LENGTH

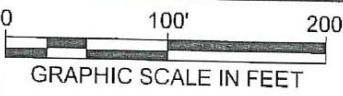
TRACT 53 BLOCK 89  
PALM BEACH FARMS CO.  
PLAT NO. 3  
P.B. 2, P.G. 45-54 P.B.C.R.

TRACT 54 BLOCK 89  
PALM BEACH FARMS CO.  
PLAT NO. 3  
P.B. 2, P.G. 45-54 P.B.C.R.

MATCHLINE - SEE PAGE SD-11

\\CTAFILE02\SURVEY\_PROJECTS\PROJECTS\2008\08-0049-005-01 MAIN STREET AT COCONUT CREEK\DRAWINGS\SKETCH\_AND\_DESC\CDD BNDY BASE\_TO CTA\_2024-08-19.DWG

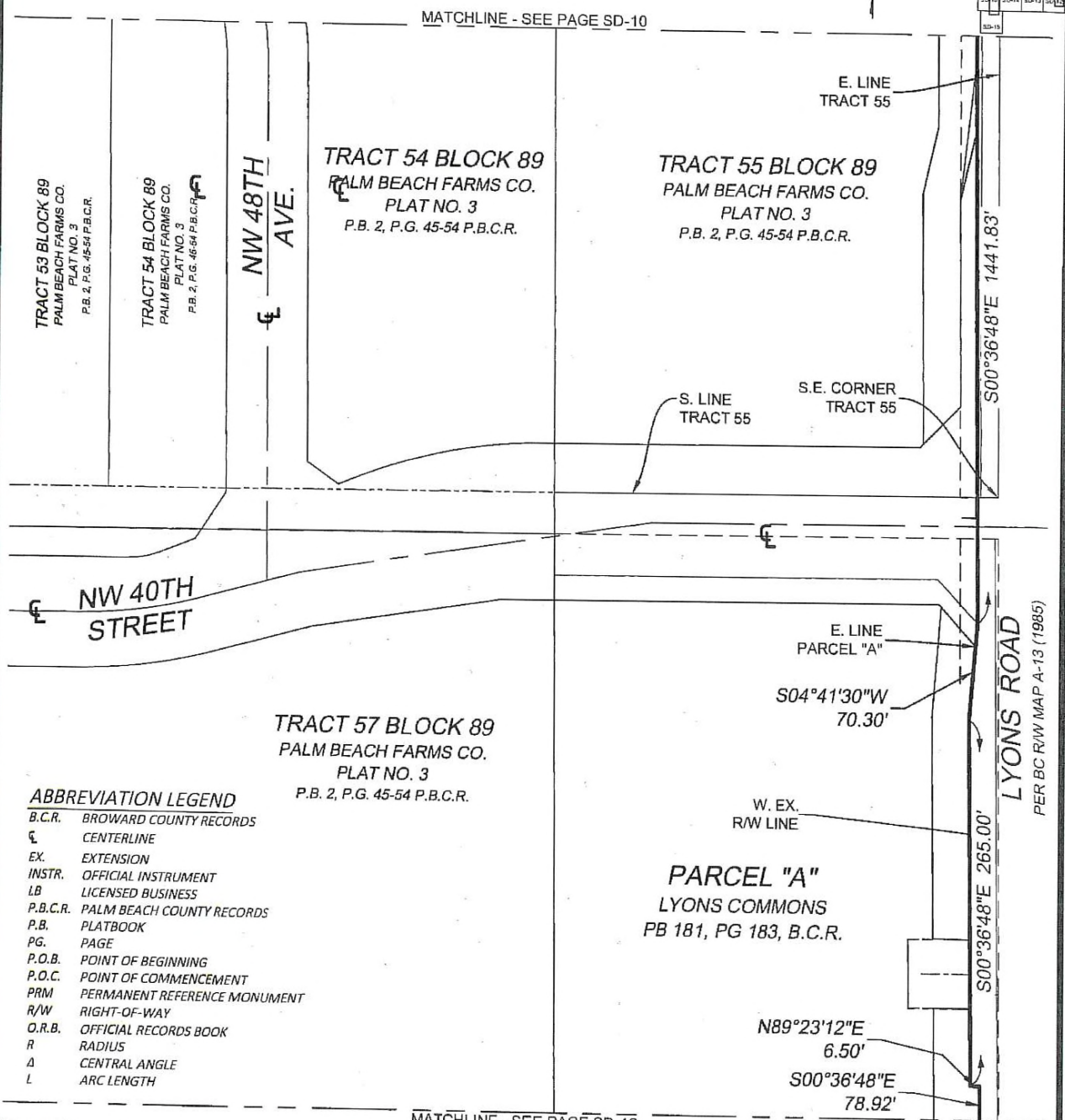
|   |                      |                       |
|---|----------------------|-----------------------|
| <p><b>Craven • Thompson &amp; Associates, Inc.</b><br/>ENGINEERS • PLANNERS • SURVEYOR'S<br/>3563 N.W. 53RD STREET, FORT LAUDERDALE, FLORIDA 33309 FAX: (954) 739-6409 TEL.: (954) 739-6400<br/>FLORIDA LICENSED ENGINEERING, SURVEYING &amp; MAPPING BUSINESS No. 271<br/>MATERIAL SHOWN HEREON IS THE PROPERTY OF CRAVEN-THOMPSON &amp; ASSOCIATES, INC. AND SHALL NOT BE REPRODUCED IN WHOLE OR IN PART WITHOUT WRITTEN PERMISSION. COPYRIGHT (C) 2025</p> | JOB NO.: 08-0049-005 | SHEET 10 of 22 SHEETS |
|   | DRAWN BY: JDP        | F.B. N/A PG. N/A      |
|   | CHECKED BY: RC       | DATED: 02/10/2025     |



SKETCH OF DESCRIPTION:  
CDD LAND CONVEYANCE PARCEL

|       |       |       |       |
|-------|-------|-------|-------|
| SD-2  | SD-3  | SD-4  | SD-5  |
| SD-6  | SD-7  | SD-8  | SD-9  |
| SD-10 | SD-11 | SD-12 | SD-13 |
| SD-14 | SD-15 | SD-16 | SD-17 |
| SD-18 | SD-19 | SD-20 | SD-21 |

SHEET MAP

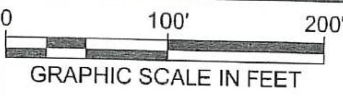


- ABBREVIATION LEGEND**
- B.C.R. BROWARD COUNTY RECORDS
  - CL CENTERLINE
  - EX. EXTENSION
  - INSTR. OFFICIAL INSTRUMENT
  - LB LICENSED BUSINESS
  - P.B.C.R. PALM BEACH COUNTY RECORDS
  - P.B. PLATBOOK
  - PG. PAGE
  - P.O.B. POINT OF BEGINNING
  - P.O.C. POINT OF COMMENCEMENT
  - PRM PERMANENT REFERENCE MONUMENT
  - R/W RIGHT-OF-WAY
  - O.R.B. OFFICIAL RECORDS BOOK
  - R. RADIUS
  - Δ CENTRAL ANGLE
  - L. ARC LENGTH

MATCHLINE - SEE PAGE SD-12

\\CTAFI02\SURVEY\_PROJECTS\PROJECTS\2008\08-0049-005-01 MAIN STREET AT COCONUT CREEK\DRAWINGS\SKETCH\_AND\_DESC\CDD BNDY BASE\_TO CTA\_2024-08-19.DWG

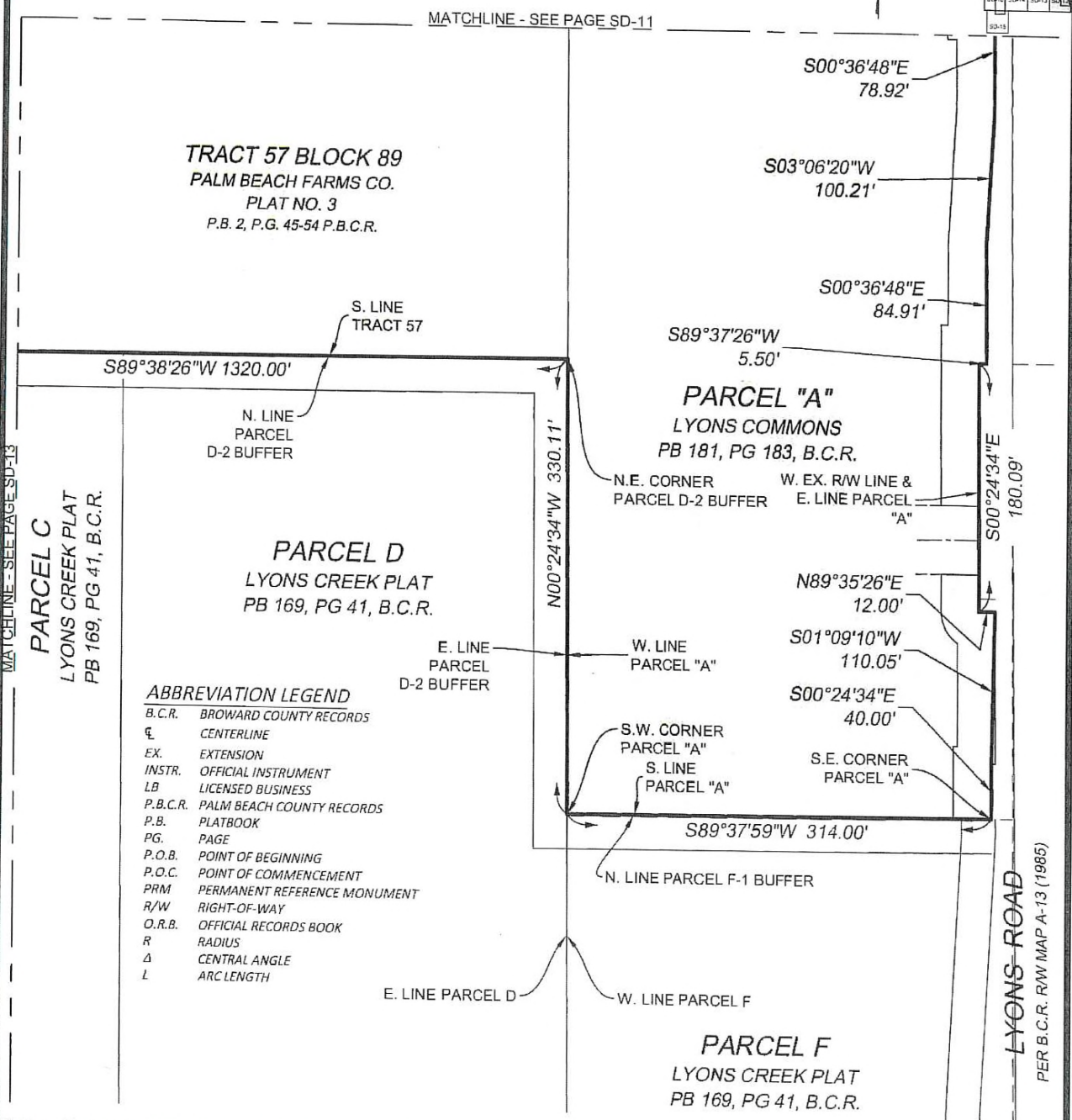
|   |                      |                       |         |
|---|----------------------|-----------------------|---------|
| <p><b>CRAVEN • THOMPSON &amp; ASSOCIATES, INC.</b><br/>ENGINEERS PLANNERS SURVEYOR'S<br/>3563 N.W. 53RD STREET, FORT LAUDERDALE, FLORIDA 33309 FAX: (954) 739-6409 TEL.: (954) 739-6400<br/>FLORIDA LICENSED ENGINEERING, SURVEYING &amp; MAPPING BUSINESS No. 271<br/>MATERIAL SHOWN HEREON IS THE PROPERTY OF CRAVEN-THOMPSON &amp; ASSOCIATES, INC. AND SHALL NOT BE REPRODUCED IN WHOLE OR IN PART WITHOUT WRITTEN PERMISSION. COPYRIGHT (C) 2025</p> | JOB NO.: 08-0049-005 | SHEET 11 of 22 SHEETS |         |
|   | DRAWN BY: JDP        | F.B. N/A              | PG. N/A |
|   | CHECKED BY: RC       | DATED: 02/10/2025     |         |

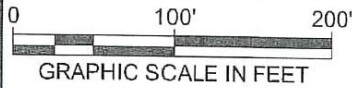


**SKETCH OF DESCRIPTION:  
CDD LAND CONVEYANCE PARCEL**

|       |       |       |       |
|-------|-------|-------|-------|
| SD-1  | SD-2  | SD-3  | SD-4  |
| SD-5  | SD-6  | SD-7  | SD-8  |
| SD-9  | SD-10 | SD-11 | SD-12 |
| SD-13 | SD-14 | SD-15 | SD-16 |
| SD-17 | SD-18 | SD-19 | SD-20 |

SHEET MAP





SKETCH OF DESCRIPTION:  
CDD LAND CONVEYANCE PARCEL



TRACT 58 BLOCK 89  
PALM BEACH FARMS CO.  
PLAT NO. 3  
P.B. 2, P.G. 45-54 P.B.C.R.

TRACT 57 BLOCK 89  
PALM BEACH FARMS CO.  
PLAT NO. 3  
P.B. 2, P.G. 45-54 P.B.C.R.

S. LINE  
TRACT 57

S89°38'26"W 1320.00'

N. LINE  
PARCEL  
B-2 BUFFER

N. LINE  
PARCEL  
C-2 BUFFER

PARCEL B  
LYONS CREEK PLAT  
PB 169, PG 41, B.C.R.

PARCEL C  
LYONS CREEK PLAT  
PB 169, PG 41, B.C.R.

ABBREVIATION LEGEND

|          |                              |
|----------|------------------------------|
| B.C.R.   | BROWARD COUNTY RECORDS       |
| ⊕        | CENTERLINE                   |
| EX.      | EXTENSION                    |
| INSTR.   | OFFICIAL INSTRUMENT          |
| LB       | LICENSED BUSINESS            |
| P.B.C.R. | PALM BEACH COUNTY RECORDS    |
| P.B.     | PLATBOOK                     |
| PG.      | PAGE                         |
| P.O.B.   | POINT OF BEGINNING           |
| P.O.C.   | POINT OF COMMENCEMENT        |
| PRM      | PERMANENT REFERENCE MONUMENT |
| R/W      | RIGHT-OF-WAY                 |
| O.R.B.   | OFFICIAL RECORDS BOOK        |
| R        | RADIUS                       |
| Δ        | CENTRAL ANGLE                |
| L        | ARC LENGTH                   |

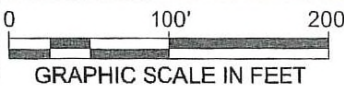
MATCHLINE - SEE PAGE SD-14

MATCHLINE - SEE PAGE SD-17

\\CTAFIELD2\SURVEY\_PROJECTS\PROJECTS\2008\08-0049-005-01 MAIN STREET AT COCONUT CREEK\DRAWINGS\SKETCH\_AND\_DESC\CDD BNDY BASE\_TO CTA\_2024-08-19.DWG

**Craven • Thompson & Associates, Inc.**  
ENGINEERS • PLANNERS • SURVEYOR'S  
3563 N.W. 53RD STREET, FORT LAUDERDALE, FLORIDA 33309 FAX: (954) 739-6409 TEL.: (954) 739-6400  
FLORIDA LICENSED ENGINEERING, SURVEYING & MAPPING BUSINESS No. 271  
MATERIAL SHOWN HEREON IS THE PROPERTY OF CRAVEN-THOMPSON & ASSOCIATES, INC. AND SHALL NOT BE REPRODUCED IN WHOLE OR IN PART WITHOUT WRITTEN PERMISSION. COPYRIGHT (C) 2025

|                      |                       |
|----------------------|-----------------------|
| JOB NO.: 08-0049-005 | SHEET 13 of 22 SHEETS |
| DRAWN BY: JDP        | F.B. N/A PG. N/A      |
| CHECKED BY: RC       | DATED: 02/10/2025     |



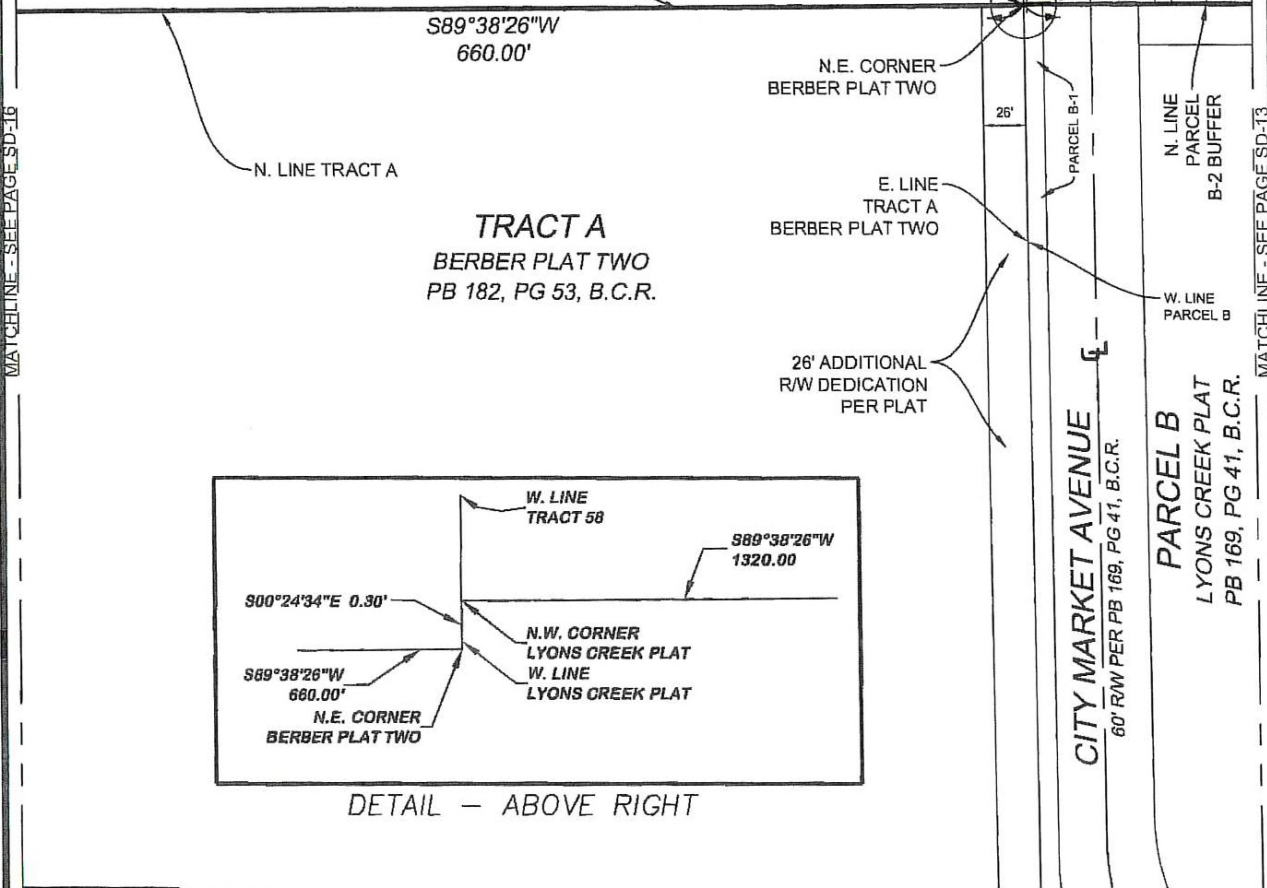
SKETCH OF DESCRIPTION:  
CDD LAND CONVEYANCE PARCEL



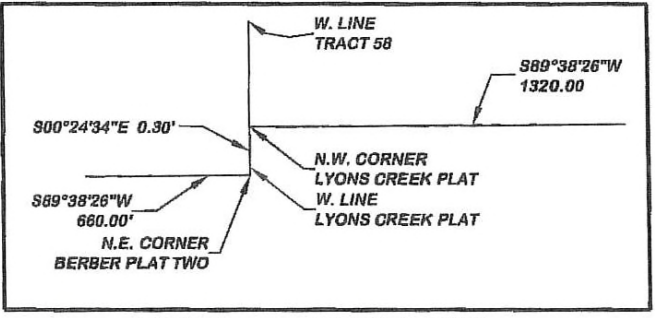
- ABBREVIATION LEGEND**
- B.C.R. BROWARD COUNTY RECORDS
  - CL CENTERLINE
  - EX. EXTENSION
  - INSTR. OFFICIAL INSTRUMENT
  - LB LICENSED BUSINESS
  - P.B.C.R. PALM BEACH COUNTY RECORDS
  - P.B. PLATBOOK
  - PG. PAGE
  - P.O.B. POINT OF BEGINNING
  - P.O.C. POINT OF COMMENCEMENT
  - PRM PERMANENT REFERENCE MONUMENT
  - R/W RIGHT-OF-WAY
  - O.R.B. OFFICIAL RECORDS BOOK
  - R RADIUS
  - Δ CENTRAL ANGLE
  - L ARC LENGTH

**TRACT 59 BLOCK 89**  
PALM BEACH FARMS CO.  
PLAT NO. 3  
P.B. 2, P.G. 45-54 P.B.C.R.

MATCHLINE - SEE PAGE SD-16



MATCHLINE - SEE PAGE SD-13



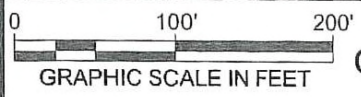
DETAIL - ABOVE RIGHT

MATCHLINE - SEE PAGE SD-15

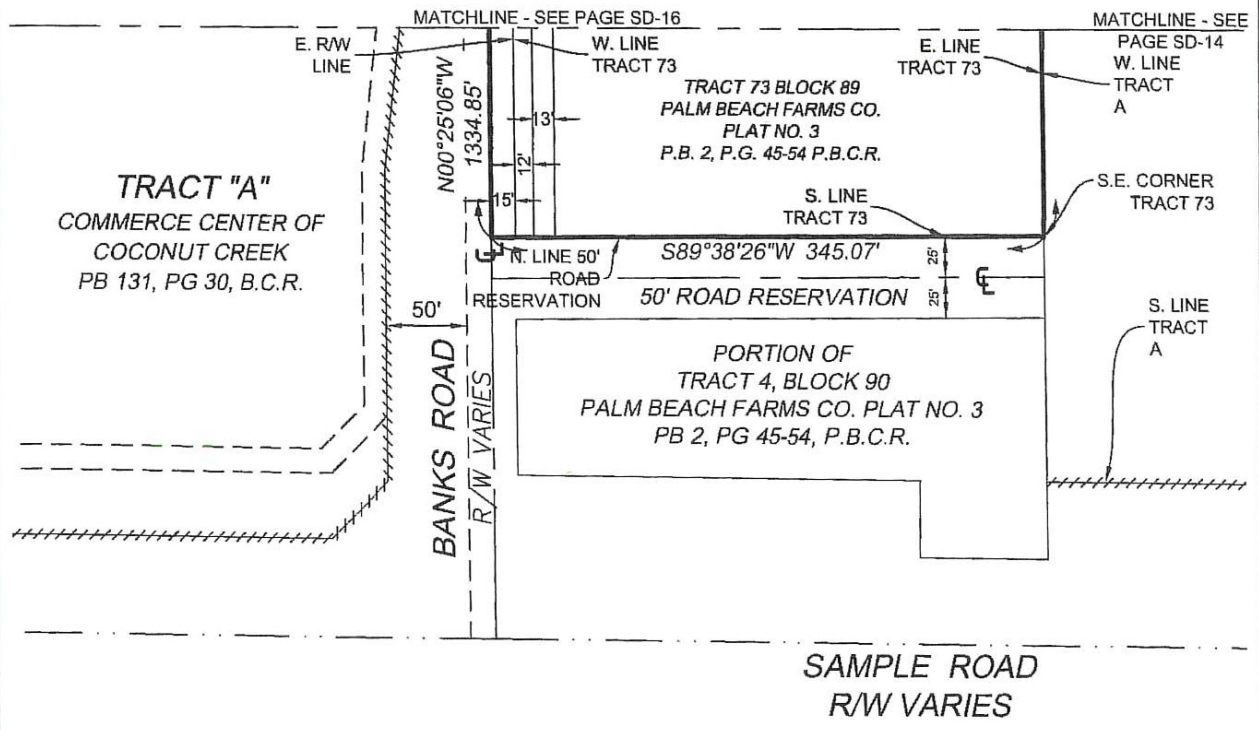
\\CTAF\FILE02\SURVEY\_PROJECTS\PROJECTS\2008\08-0049-005-01 MAIN STREET AT COCONUT CREEK\DRAWINGS\SKETCH\_AND\_DESC\CDD BNDY BASE\_TO CTA\_2024-08-19.DWG

**Craven • Thompson & Associates, Inc.**  
ENGINEERS • PLANNERS • SURVEYOR'S  
3563 N.W. 53RD STREET, FORT LAUDERDALE, FLORIDA 33309 FAX: (954) 739-6409 TEL.: (954) 739-6400  
FLORIDA LICENSED ENGINEERING, SURVEYING & MAPPING BUSINESS No. 271  
MATERIAL SHOWN HEREON IS THE PROPERTY OF CRAVEN-THOMPSON & ASSOCIATES, INC. AND SHALL NOT BE REPRODUCED IN WHOLE OR IN PART WITHOUT WRITTEN PERMISSION. COPYRIGHT (C) 2025

|                      |                       |
|----------------------|-----------------------|
| JOB NO.: 08-0049-005 | SHEET 14 of 22 SHEETS |
| DRAWN BY: JDP        | F.B. N/A PG. N/A      |
| CHECKED BY: RC       | DATED: 02/10/2025     |

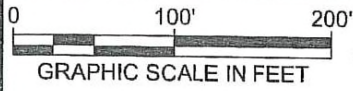


SKETCH OF DESCRIPTION:  
CDD LAND CONVEYANCE PARCEL

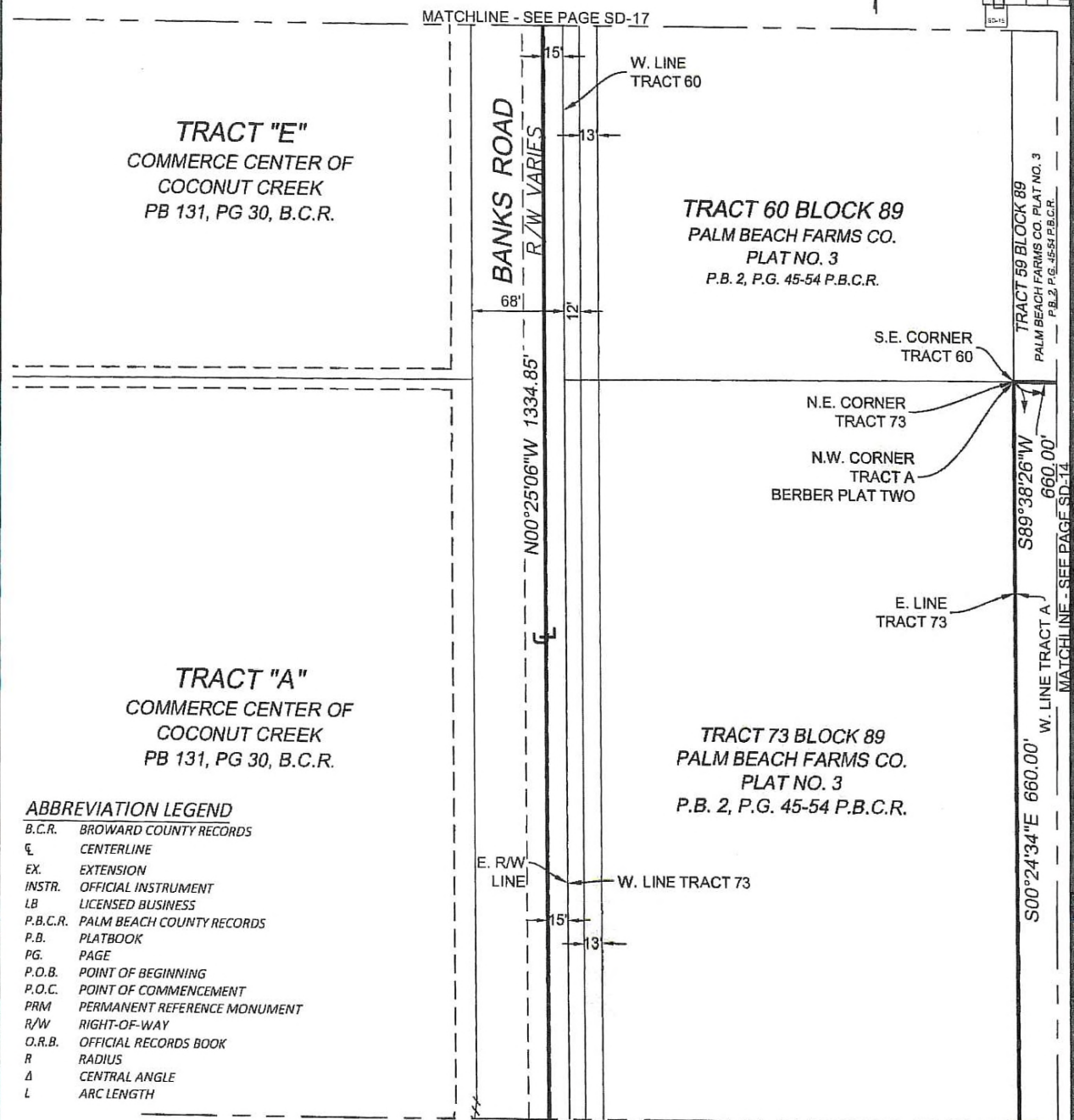


**ABBREVIATION LEGEND**

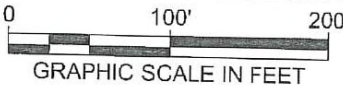
- B.C.R. BROWARD COUNTY RECORDS
- ☒ CENTERLINE
- EX. EXTENSION
- INSTR. OFFICIAL INSTRUMENT
- LB LICENSED BUSINESS
- P.B.C.R. PALM BEACH COUNTY RECORDS
- P.B. PLATBOOK
- PG. PAGE
- P.O.B. POINT OF BEGINNING
- P.O.C. POINT OF COMMENCEMENT
- PRM PERMANENT REFERENCE MONUMENT
- R/W RIGHT-OF-WAY
- O.R.B. OFFICIAL RECORDS BOOK
- R RADIUS
- Δ CENTRAL ANGLE
- L ARC LENGTH



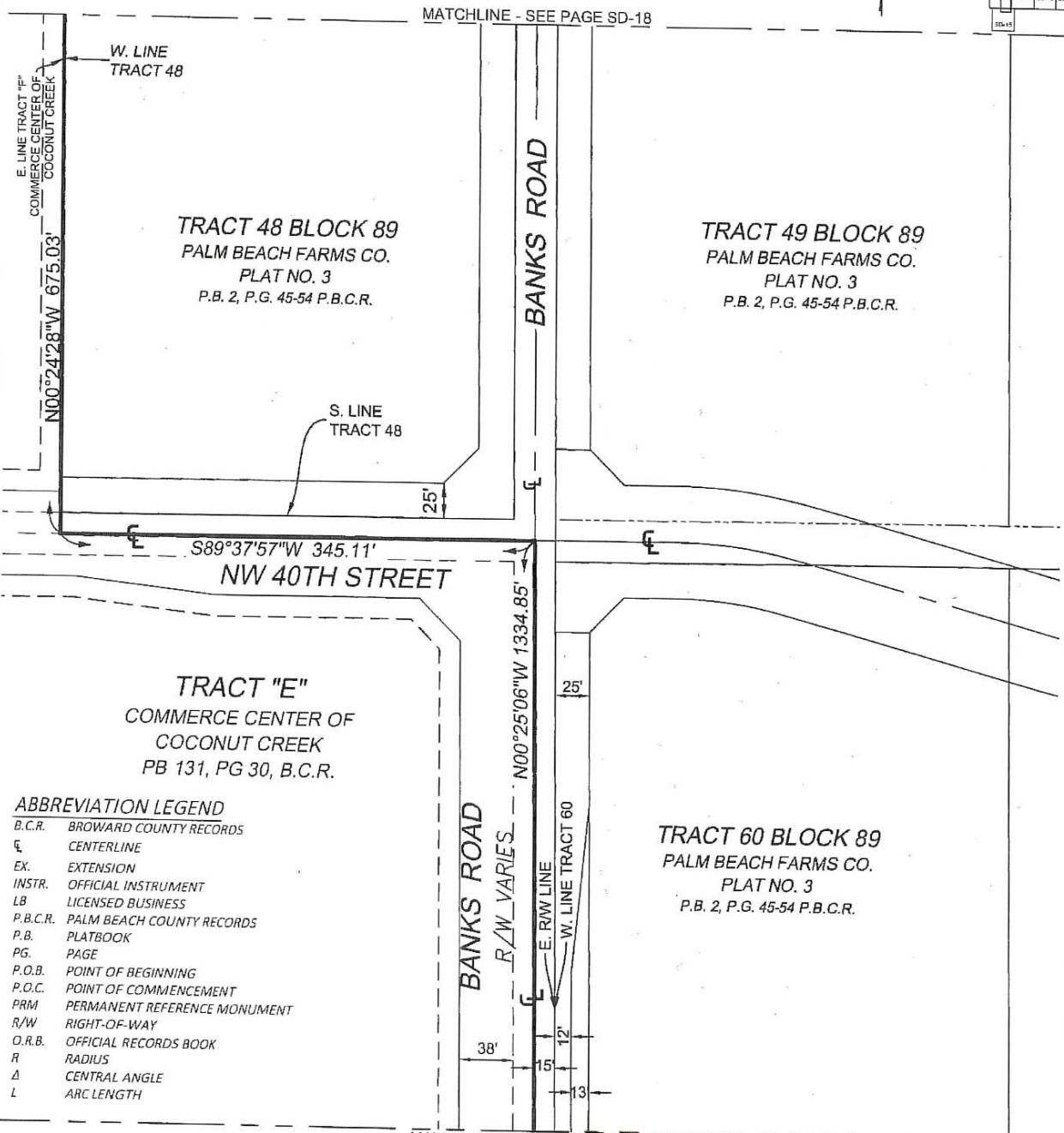
# SKETCH OF DESCRIPTION: CDD LAND CONVEYANCE PARCEL



- ABBREVIATION LEGEND**
- B.C.R. BROWARD COUNTY RECORDS
  - CL CENTERLINE
  - EX. EXTENSION
  - INSTR. OFFICIAL INSTRUMENT
  - LB LICENSED BUSINESS
  - P.B.C.R. PALM BEACH COUNTY RECORDS
  - P.B. PLATBOOK
  - PG. PAGE
  - P.O.B. POINT OF BEGINNING
  - P.O.C. POINT OF COMMENCEMENT
  - PRM PERMANENT REFERENCE MONUMENT
  - R/W RIGHT-OF-WAY
  - O.R.B. OFFICIAL RECORDS BOOK
  - R RADIUS
  - Δ CENTRAL ANGLE
  - L ARC LENGTH



SKETCH OF DESCRIPTION:  
CDD LAND CONVEYANCE PARCEL

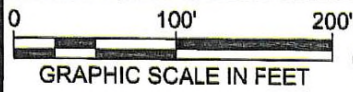


- ABBREVIATION LEGEND**
- B.C.R. BROWARD COUNTY RECORDS
  - CL CENTERLINE
  - EX. EXTENSION
  - INSTR. OFFICIAL INSTRUMENT
  - LB LICENSED BUSINESS
  - P.B.C.R. PALM BEACH COUNTY RECORDS
  - P.B. PLATBOOK
  - PG. PAGE
  - P.O.B. POINT OF BEGINNING
  - P.O.C. POINT OF COMMENCEMENT
  - PRM PERMANENT REFERENCE MONUMENT
  - R/W RIGHT-OF-WAY
  - O.R.B. OFFICIAL RECORDS BOOK
  - R RADIUS
  - Δ CENTRAL ANGLE
  - L ARC LENGTH

\\CTAFLE02\SURVEY\_PROJECTS\PROJECTS\2008\08-0049-005-01 MAIN STREET AT COCONUT CREEK\DRAWINGS\SKETCH\_AND\_DESC\CDD BNDY BASE\_TO CTA\_2024-08-19.DWG

**Craven • Thompson & Associates, Inc.**  
 ENGINEERS PLANNERS SURVEYOR'S  
 3583 N.W. 53RD STREET, FORT LAUDERDALE, FLORIDA 33309 FAX: (954) 739-8409 TEL.: (954) 739-6400  
 FLORIDA LICENSED ENGINEERING, SURVEYING & MAPPING BUSINESS No. 271  
 MATERIAL SHOWN HEREON IS THE PROPERTY OF CRAVEN-THOMPSON & ASSOCIATES, INC. AND SHALL NOT BE REPRODUCED IN WHOLE OR IN PART WITHOUT WRITTEN PERMISSION. COPYRIGHT (C) 2025

|                      |                       |
|----------------------|-----------------------|
| JOB NO.: 08-0049-005 | SHEET 17 of 22 SHEETS |
| DRAWN BY: JDP        | F.B. N/A PG. N/A      |
| CHECKED BY: RC       | DATED: 02/10/2025     |



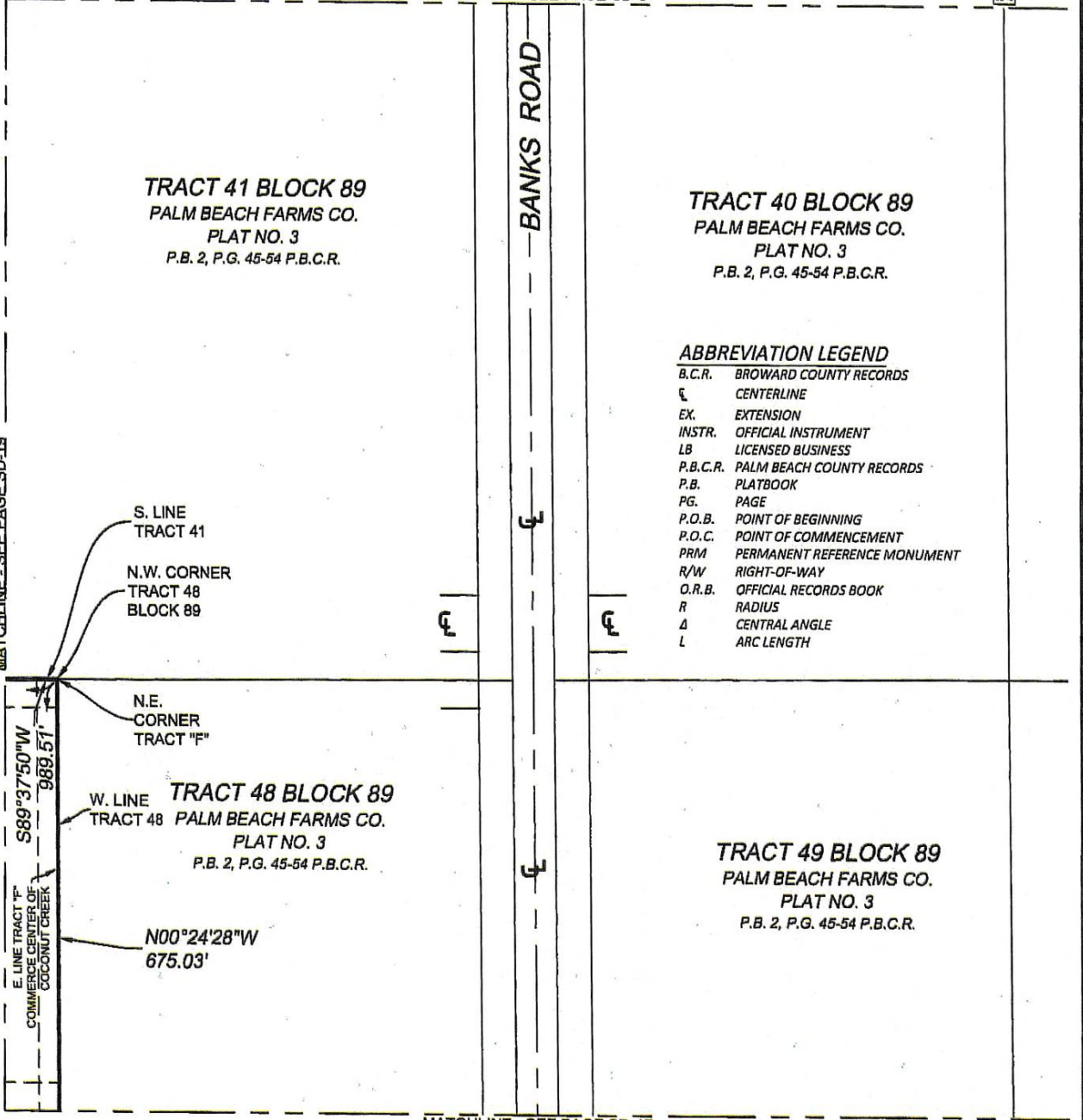
**SKETCH OF DESCRIPTION:  
CDD LAND CONVEYANCE PARCEL**

|       |       |       |       |
|-------|-------|-------|-------|
| SD-1  | SD-2  | SD-3  | SD-4  |
| SD-5  | SD-6  | SD-7  | SD-8  |
| SD-9  | SD-10 | SD-11 | SD-12 |
| SD-13 | SD-14 | SD-15 | SD-16 |
| SD-17 | SD-18 | SD-19 | SD-20 |
| SD-21 | SD-22 | SD-23 | SD-24 |
| SD-25 | SD-26 | SD-27 | SD-28 |
| SD-29 | SD-30 | SD-31 | SD-32 |

SHEET MAP

MATCHLINE - SEE PAGE SD-6

MATCHLINE - SEE PAGE SD-19



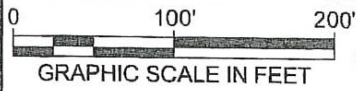
**ABBREVIATION LEGEND**

|          |                              |
|----------|------------------------------|
| B.C.R.   | BROWARD COUNTY RECORDS       |
| CL       | CENTERLINE                   |
| EX.      | EXTENSION                    |
| INSTR.   | OFFICIAL INSTRUMENT          |
| LB       | LICENSED BUSINESS            |
| P.B.C.R. | PALM BEACH COUNTY RECORDS    |
| P.B.     | PLATBOOK                     |
| PG.      | PAGE                         |
| P.O.B.   | POINT OF BEGINNING           |
| P.O.C.   | POINT OF COMMENCEMENT        |
| PRM      | PERMANENT REFERENCE MONUMENT |
| R/W      | RIGHT-OF-WAY                 |
| O.R.B.   | OFFICIAL RECORDS BOOK        |
| R        | RADIUS                       |
| Δ        | CENTRAL ANGLE                |
| L        | ARC LENGTH                   |

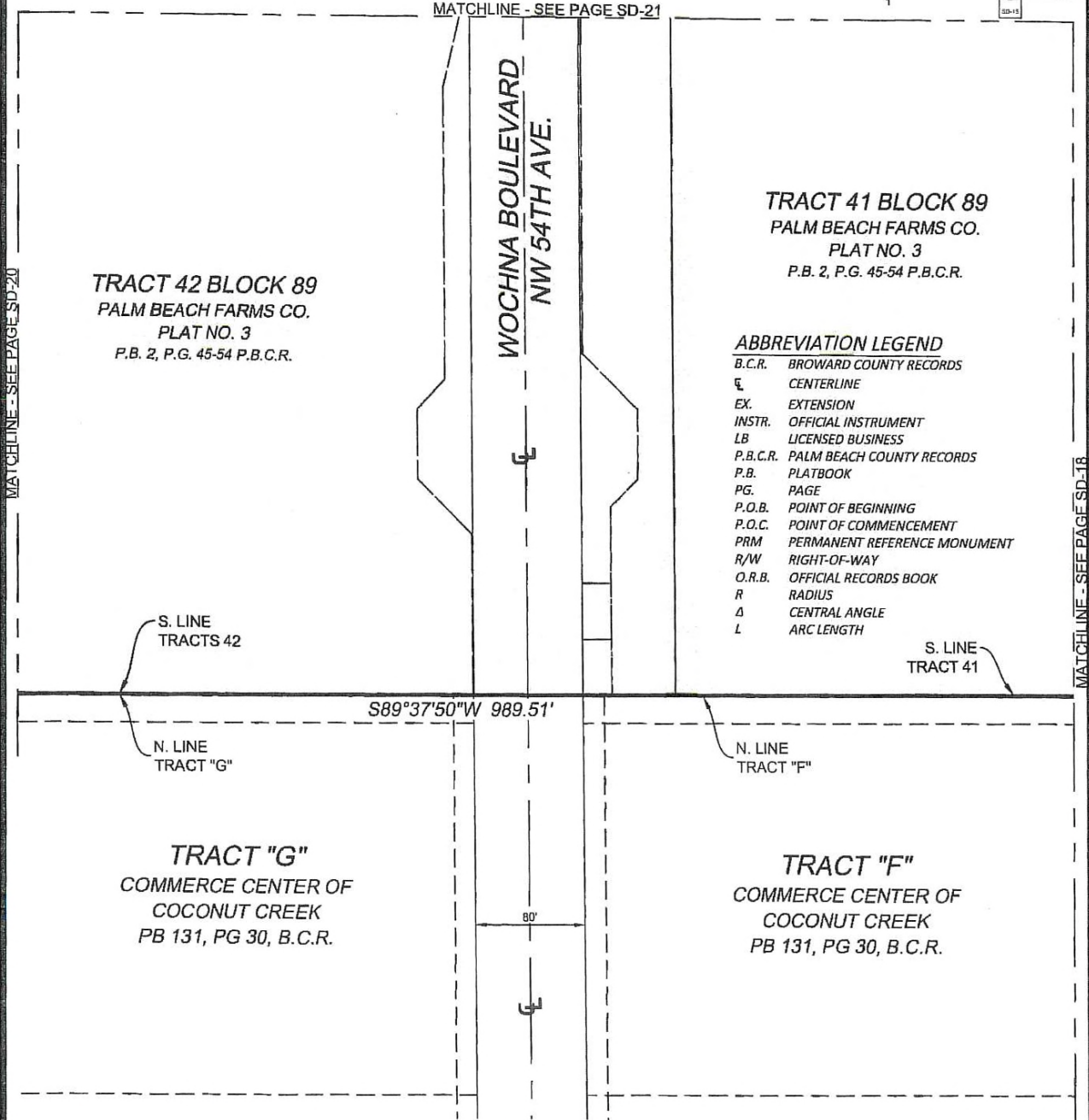
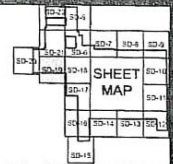
MATCHLINE - SEE PAGE SD-17

\\GTAFILE02\SURVEY\_PROJECTS\PROJECTS\2008\08-0049-005-01 MAIN STREET AT COCONUT CREEK\DRAWINGS\SKETCH\_AND\_DESC\CDD BNDY BASE\_TO CTA\_2024-08-19.DWG

|  |                      |                       |
|--|----------------------|-----------------------|
| <p><b>CRAVEN • THOMPSON &amp; ASSOCIATES, INC.</b><br/>ENGINEERS • PLANNERS • SURVEYOR'S<br/>3563 N.W. 53RD STREET, FORT LAUDERDALE, FLORIDA 33309 FAX: (954) 739-8409 TEL.: (954) 739-8400<br/>FLORIDA LICENSED ENGINEERING SURVEYING &amp; MAPPING BUSINESS No. 271<br/>MATERIAL SHOWN HEREON IS THE PROPERTY OF CRAVEN-THOMPSON &amp; ASSOCIATES, INC. AND SHALL NOT BE REPRODUCED IN WHOLE OR IN PART WITHOUT WRITTEN PERMISSION. COPYRIGHT (C) 2025</p> | JOB NO.: 08-0049-005 | SHEET 18 of 22 SHEETS |
|  | DRAWN BY: JDP        | F.B. N/A PG. N/A      |
|  | CHECKED BY: RC       | DATED: 02/10/2025     |



**SKETCH OF DESCRIPTION:  
CDD LAND CONVEYANCE PARCEL**

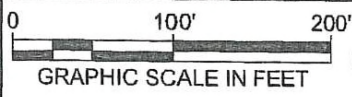


- ABBREVIATION LEGEND**
- B.C.R. BROWARD COUNTY RECORDS
  - ☒ CENTERLINE
  - EX. EXTENSION
  - INSTR. OFFICIAL INSTRUMENT
  - LB LICENSED BUSINESS
  - P.B.C.R. PALM BEACH COUNTY RECORDS
  - P.B. PLATBOOK
  - PG. PAGE
  - P.O.B. POINT OF BEGINNING
  - P.O.C. POINT OF COMMENCEMENT
  - PRM PERMANENT REFERENCE MONUMENT
  - R/W RIGHT-OF-WAY
  - O.R.B. OFFICIAL RECORDS BOOK
  - R RADIUS
  - Δ CENTRAL ANGLE
  - L ARC LENGTH

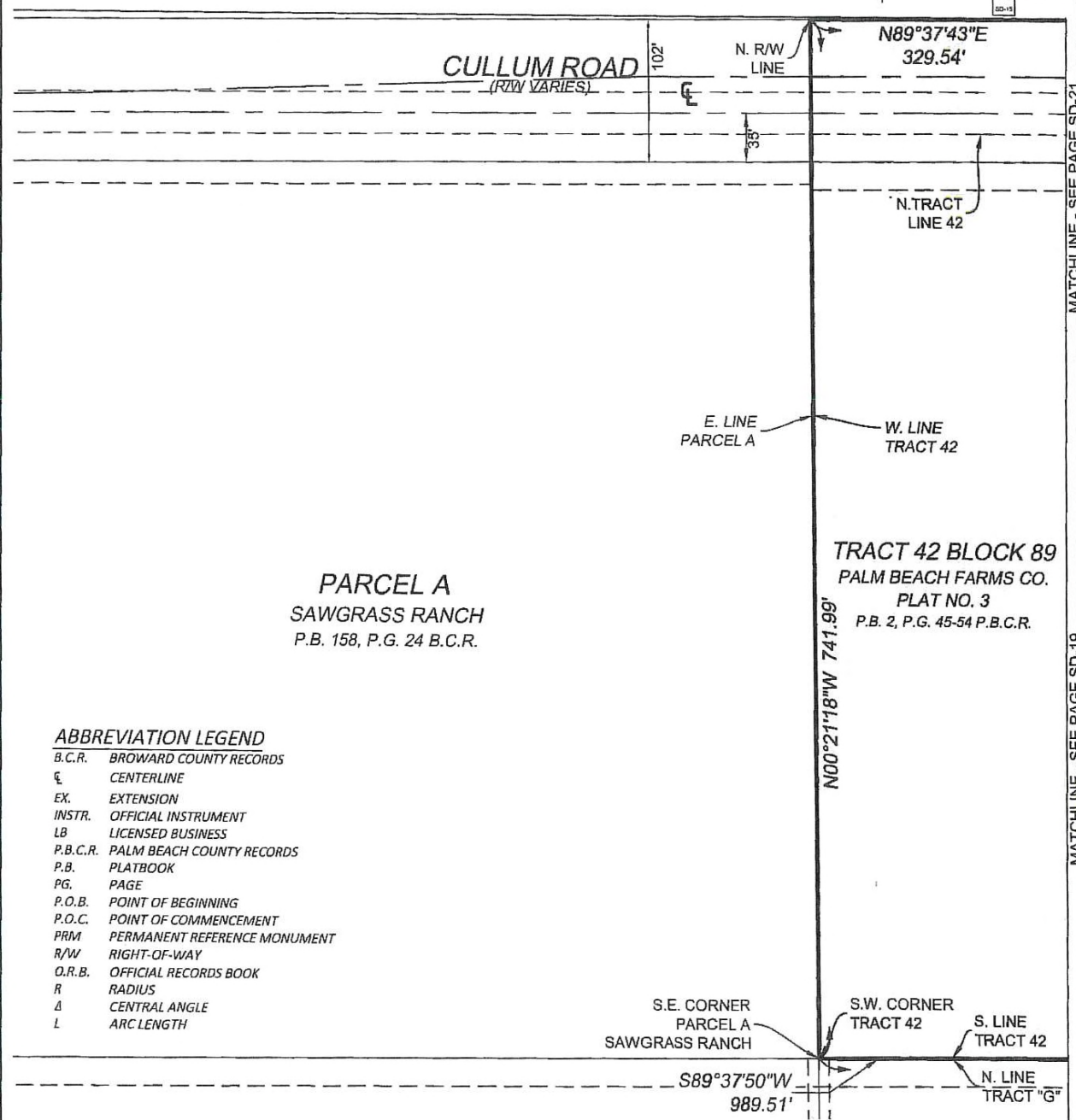
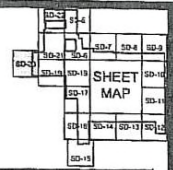
\\CTAFILE02\SURVEY\_PROJECTS\PROJECTS\2008\08-0049-005-01 MAIN STREET AT COCONUT CREEK\DRAWINGS\SKETCH\_AND\_DESC\CDD BNDY BASE TO CTA\_2024-08-19.DWG

**GRAVEN • THOMPSON & ASSOCIATES, INC.**  
ENGINEERS • PLANNERS • SURVEYOR'S  
3563 N.W. 53RD STREET, FORT LAUDERDALE, FLORIDA 33309 FAX: (954) 739-6409 TEL: (954) 739-8400  
FLORIDA LICENSED ENGINEERING, SURVEYING & MAPPING BUSINESS No. 271  
MATERIAL SHOWN HEREON IS THE PROPERTY OF GRAVEN-THOMPSON & ASSOCIATES, INC. AND SHALL NOT BE REPRODUCED IN WHOLE OR IN PART WITHOUT WRITTEN PERMISSION. COPYRIGHT (C) 2025

|                      |                       |
|----------------------|-----------------------|
| JOB NO.: 08-0049-005 | SHEET 19 of 22 SHEETS |
| DRAWN BY: JDP        | F.B. N/A PG. N/A      |
| CHECKED BY: RC       | DATED: 02/10/2025     |



SKETCH OF DESCRIPTION:  
CDD LAND CONVEYANCE PARCEL



**ABBREVIATION LEGEND**

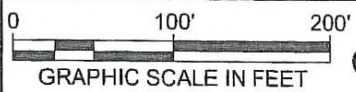
- B.C.R. BROWARD COUNTY RECORDS
- CL CENTERLINE
- EX. EXTENSION
- INSTR. OFFICIAL INSTRUMENT
- LB LICENSED BUSINESS
- P.B.C.R. PALM BEACH COUNTY RECORDS
- P.B. PLATBOOK
- PG. PAGE
- P.O.B. POINT OF BEGINNING
- P.O.C. POINT OF COMMENCEMENT
- PRM PERMANENT REFERENCE MONUMENT
- R/W RIGHT-OF-WAY
- O.R.B. OFFICIAL RECORDS BOOK
- R RADIUS
- Δ CENTRAL ANGLE
- L ARC LENGTH

\\CTAFIELD\SURVEY\_PROJECTS\PROJECTS\2008\08-0049-005-01 MAIN STREET AT COCONUT CREEK\DRAWINGS\SKETCH\_AND\_DESC\CDD BNDY BASE\_TO CTA\_2024-08-19.DWG

**Craven • Thompson & Associates, Inc.**  
ENGINEERS • PLANNERS • SURVEYOR'S  
3563 N.W. 53RD STREET, FORT LAUDERDALE, FLORIDA 33309 FAX: (954) 739-6409 TEL.: (954) 739-6400  
FLORIDA LICENSED ENGINEERING, SURVEYING & MAPPING BUSINESS No. 271  
MATERIAL SHOWN HEREON IS THE PROPERTY OF CRAVEN-THOMPSON & ASSOCIATES, INC. AND SHALL NOT BE REPRODUCED IN WHOLE OR IN PART WITHOUT WRITTEN PERMISSION. COPYRIGHT (C) 2025

|                      |                       |
|----------------------|-----------------------|
| JOB NO.: 08-0049-005 | SHEET 20 of 22 SHEETS |
| DRAWN BY: JDP        | F.B. N/A PG. N/A      |
| CHECKED BY: RC       | DATED: 02/10/2025     |

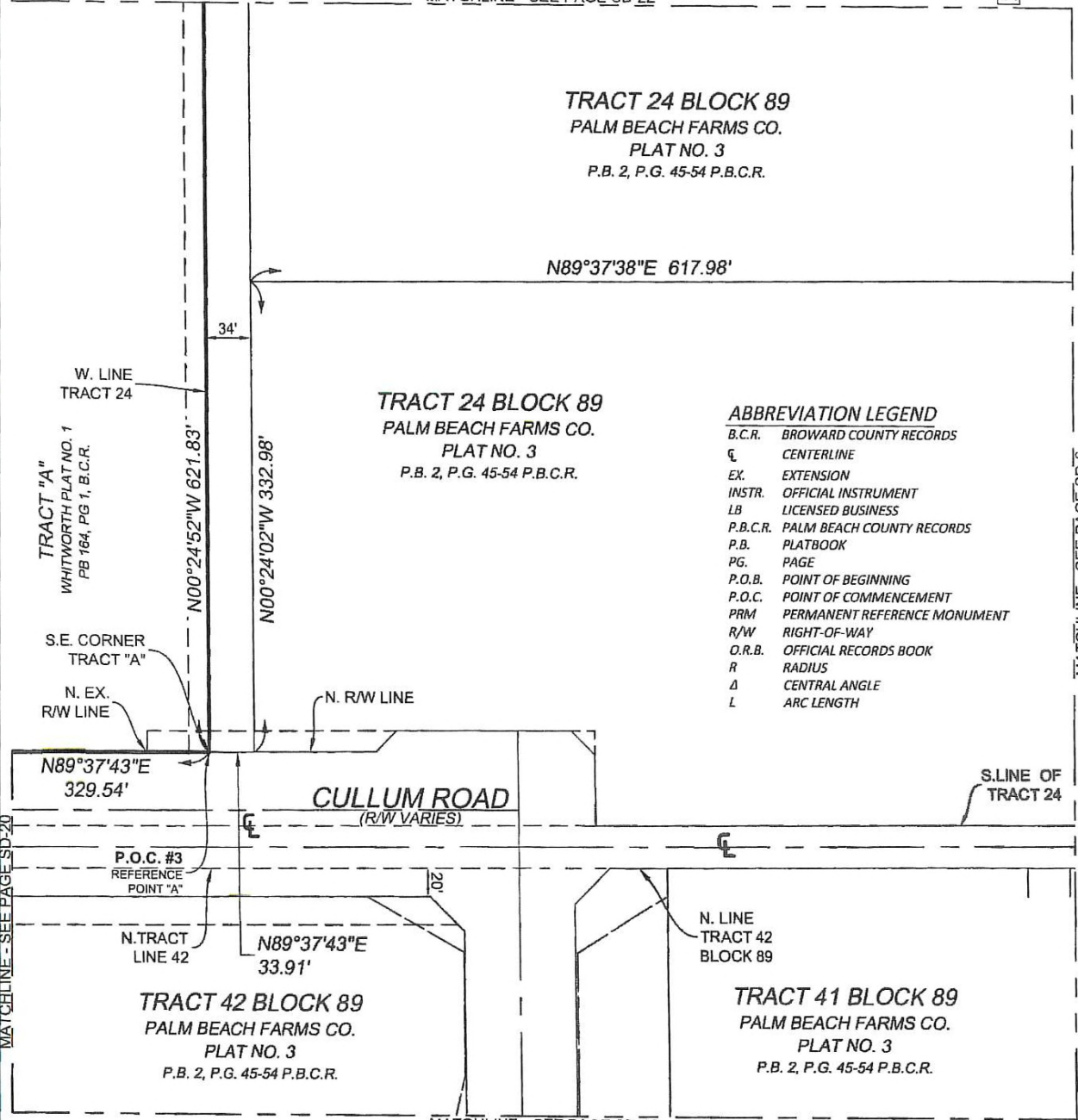
MATCHLINE - SEE PAGE SD-21  
MATCHLINE - SEE PAGE SD-19



SKETCH OF DESCRIPTION:  
CDD LAND CONVEYANCE PARCEL



MATCHLINE - SEE PAGE SD-22



**ABBREVIATION LEGEND**

|          |                              |
|----------|------------------------------|
| B.C.R.   | BROWARD COUNTY RECORDS       |
| CL       | CENTERLINE                   |
| EX.      | EXTENSION                    |
| INSTR.   | OFFICIAL INSTRUMENT          |
| LB       | LICENSED BUSINESS            |
| P.B.C.R. | PALM BEACH COUNTY RECORDS    |
| P.B.     | PLATBOOK                     |
| PG.      | PAGE                         |
| P.O.B.   | POINT OF BEGINNING           |
| P.O.C.   | POINT OF COMMENCEMENT        |
| PRM      | PERMANENT REFERENCE MONUMENT |
| R/W      | RIGHT-OF-WAY                 |
| O.R.B.   | OFFICIAL RECORDS BOOK        |
| R        | RADIUS                       |
| Δ        | CENTRAL ANGLE                |
| L        | ARC LENGTH                   |

MATCHLINE - SEE PAGE SD-20

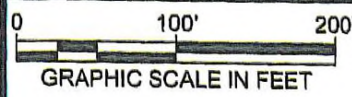
MATCHLINE - SEE PAGE SD-6

MATCHLINE - SEE PAGE SD-19

\\CTAFILE02\SURVEY\_PROJECTS\PROJECTS\2008\08-0049-005-01 MAIN STREET AT COCONUT CREEK\DRAWINGS\SKETCH\_AND\_DESC\CDD BNDY BASE\_TO CTA\_2024-08-19.DWG

**Craven • Thompson & Associates, Inc.**  
ENGINEERS • PLANNERS • SURVEYOR'S  
3563 N.W. 53RD STREET, FORT LAUDERDALE, FLORIDA 33309 FAX: (954) 739-8409 TEL.: (954) 739-8400  
FLORIDA LICENSED ENGINEERING, SURVEYING & MAPPING BUSINESS No. 271  
MATERIAL SHOWN HEREON IS THE PROPERTY OF CRAVEN-THOMPSON & ASSOCIATES, INC. AND SHALL NOT BE REPRODUCED IN WHOLE OR IN PART WITHOUT WRITTEN PERMISSION. COPYRIGHT (C) 2025

|                      |                       |
|----------------------|-----------------------|
| JOB NO.: 08-0049-005 | SHEET 21 of 22 SHEETS |
| DRAWN BY: JDP        | F.B. N/A PG. N/A      |
| CHECKED BY: RC       | DATED: 02/10/2025     |



# SKETCH OF DESCRIPTION: CDD LAND CONVEYANCE PARCEL

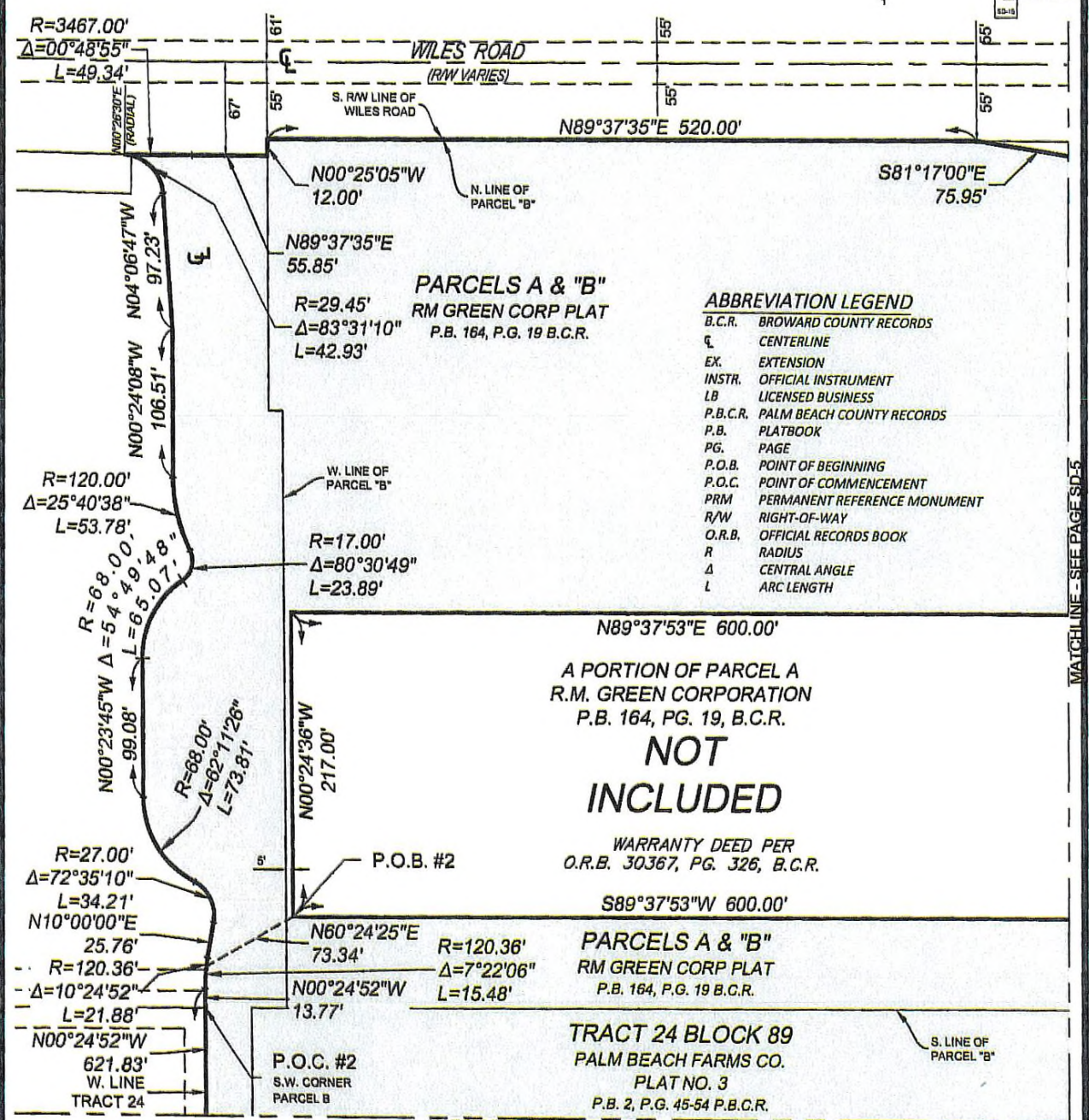
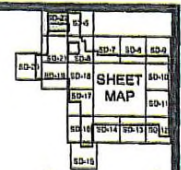


EXHIBIT B

MASTER WATER MAIN INFRASTRUCTURE EXHIBIT

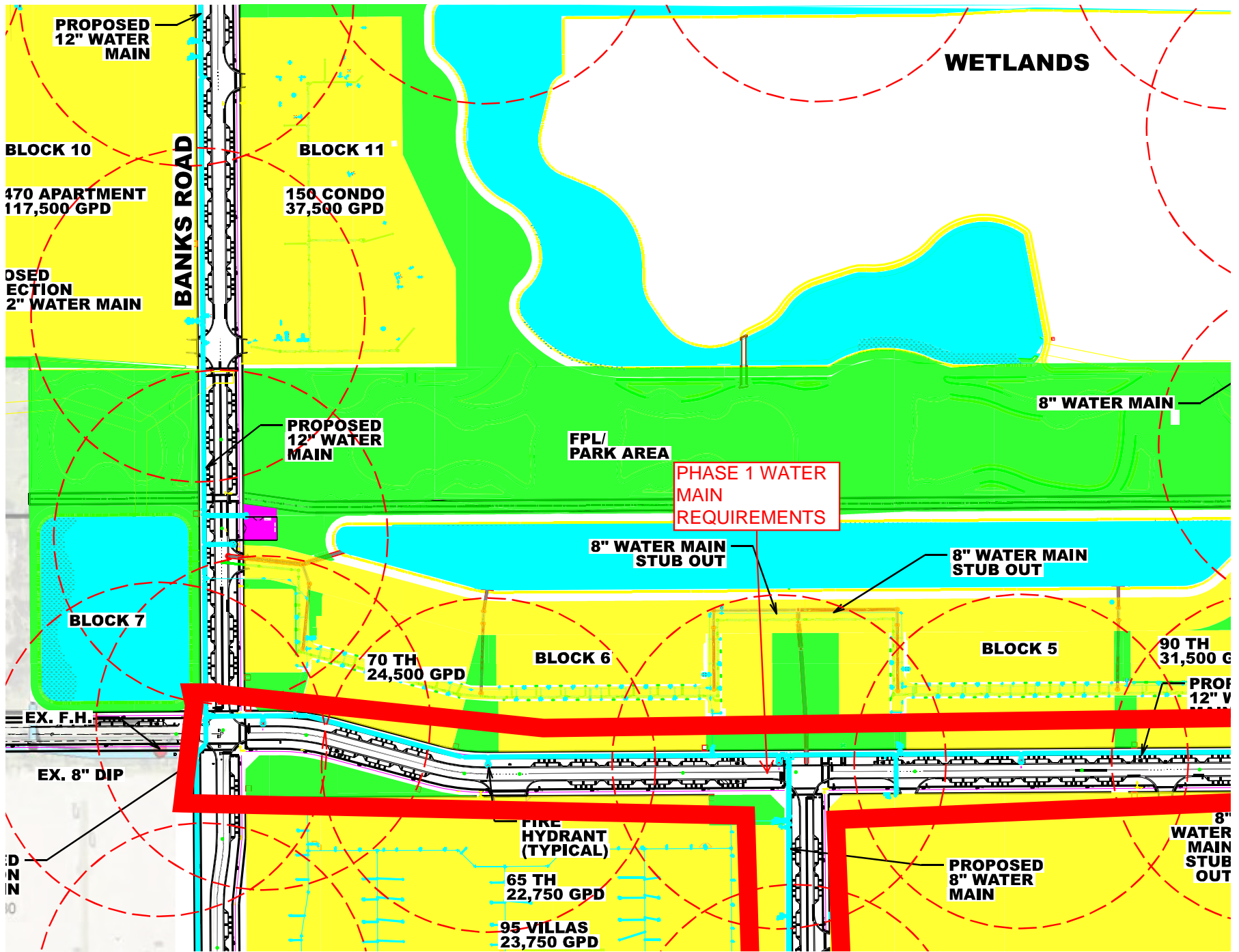


EXHIBIT C

MASTER SANITARY SEWER INFRASTRUCTURE EXHIBIT

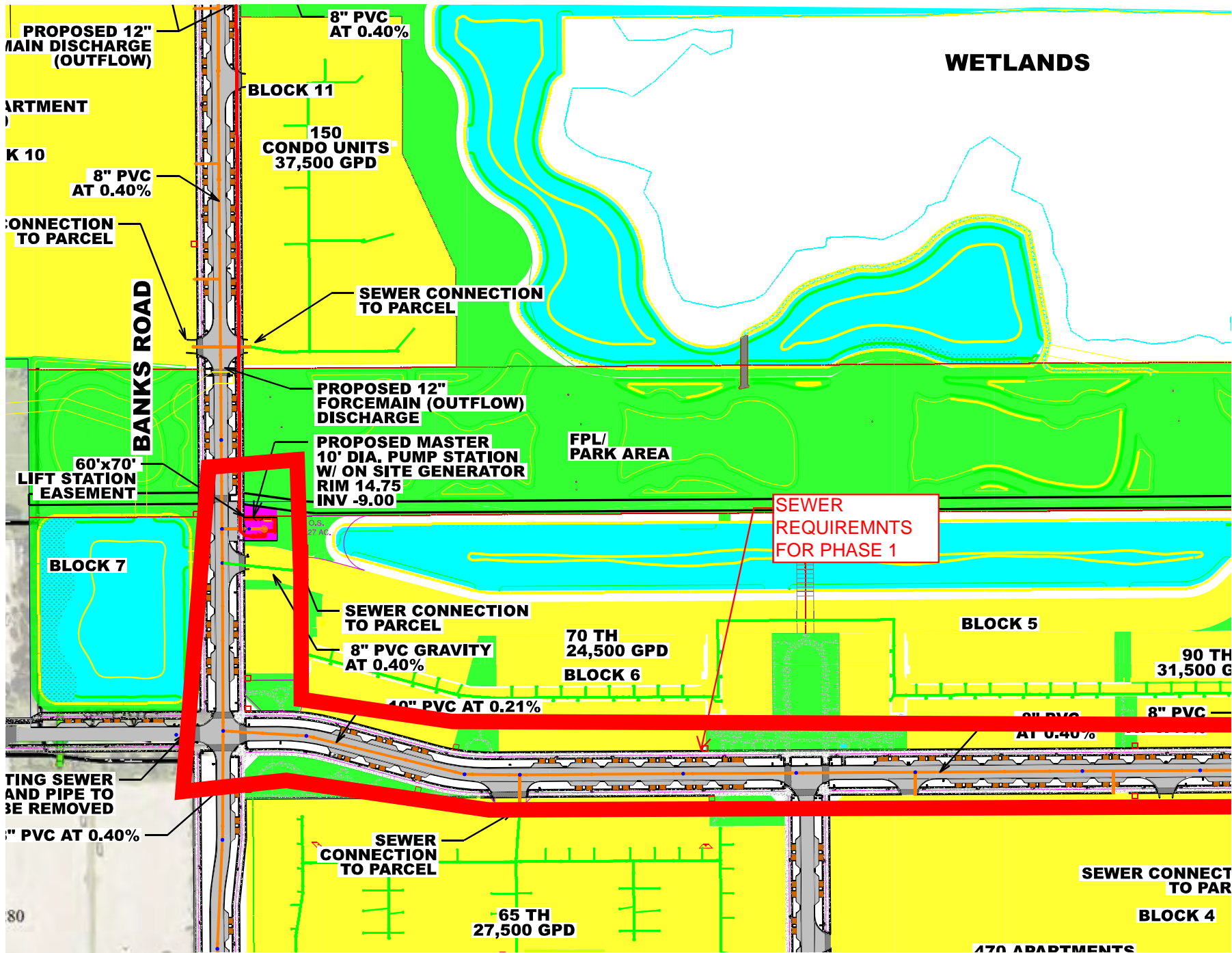


EXHIBIT D

MASTER STORMWATER AND DRAINAGE INFRASTRUCTURE EXHIBIT

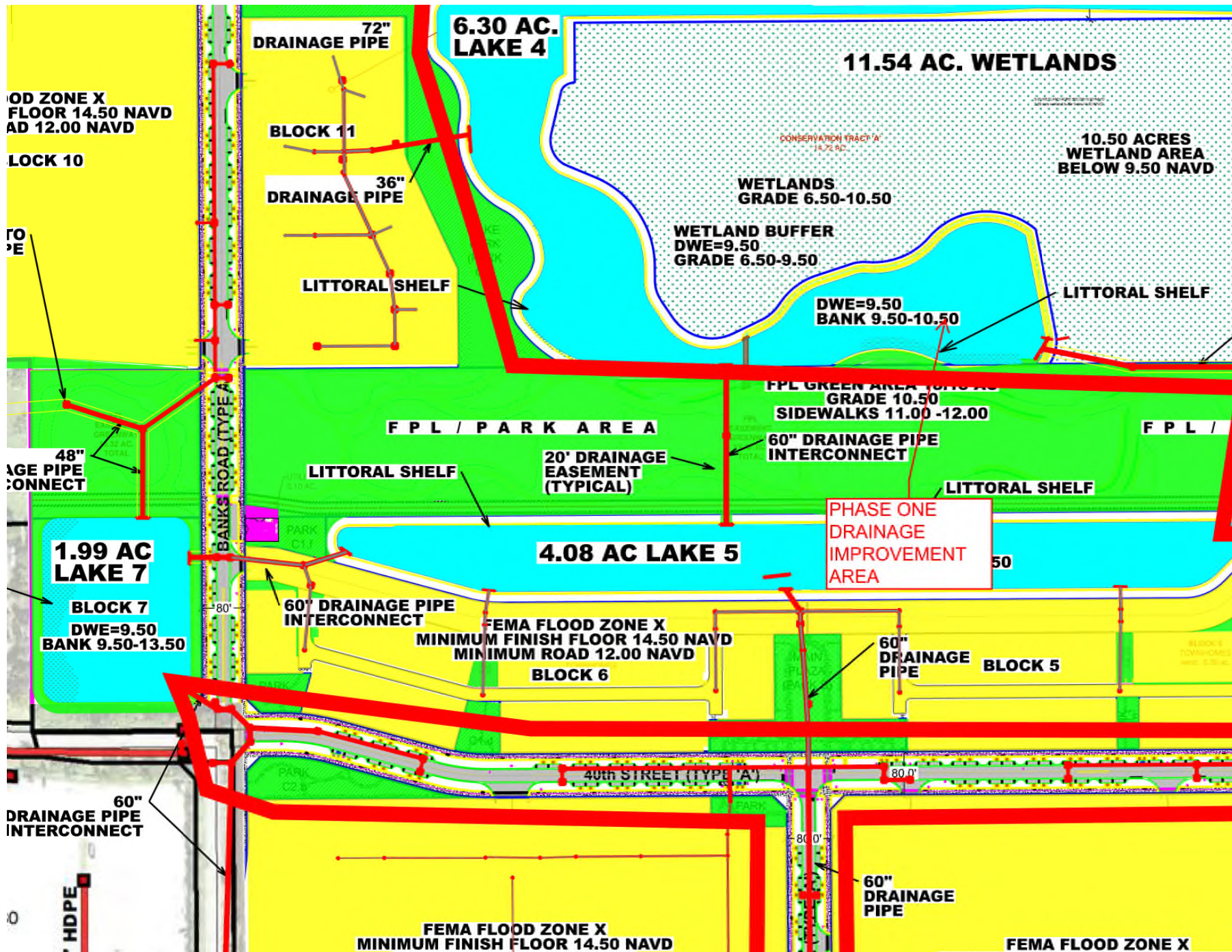


EXHIBIT E

MASTER RE-USE INFRASTRUCTURE EXHIBIT

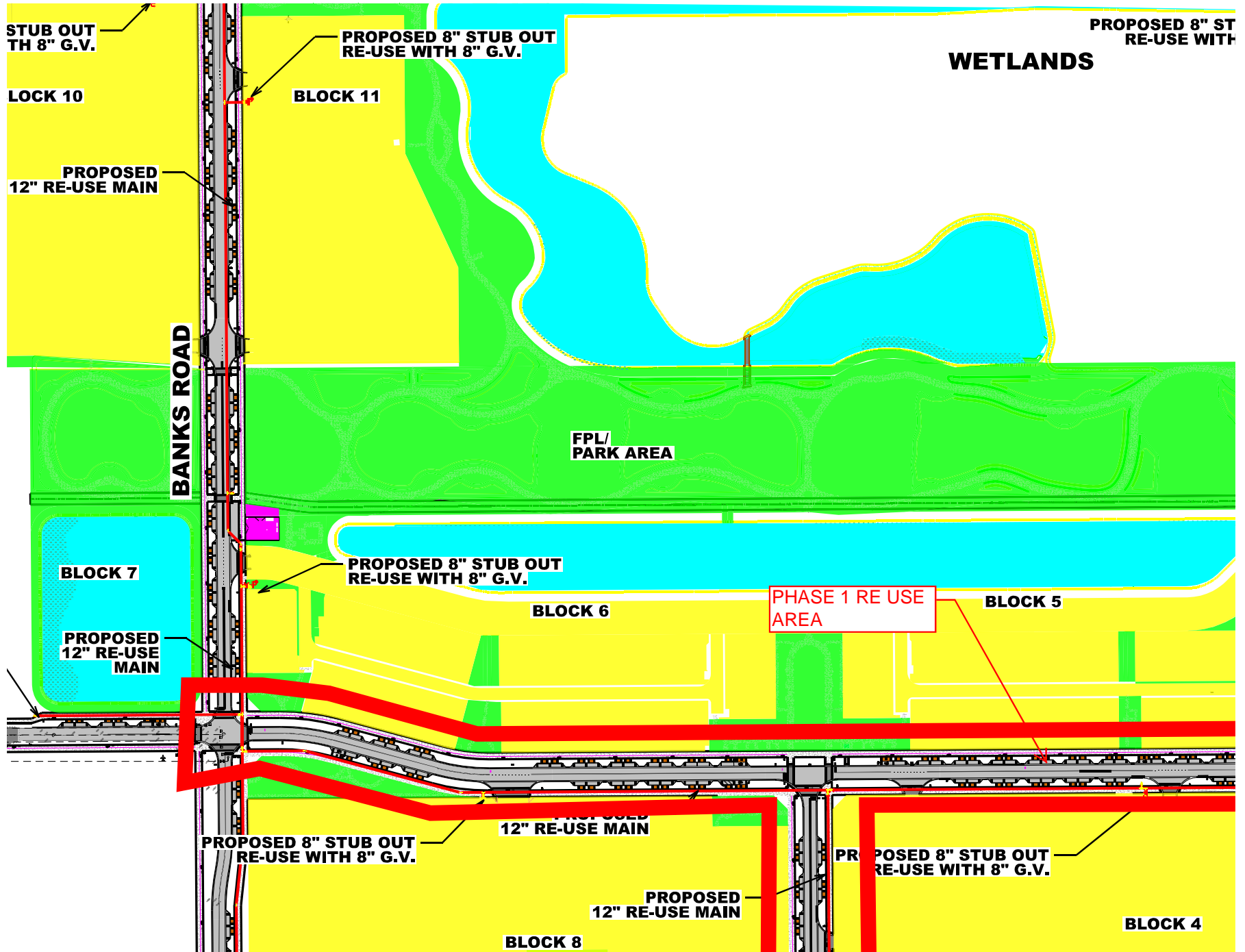


EXHIBIT F  
MASTER CONCEPTUAL SUSTAINABILITY PLAN



EXHIBIT G  
MASTER CONSTRUCTION PHASING PLAN